

# I C E N E

## B U L L E T I N

[www.ickletonvillage.co.uk](http://www.ickletonvillage.co.uk)

[www.ickletonparishcouncil.org.uk](http://www.ickletonparishcouncil.org.uk)

## JULY 2023

**Editor:**

John Williams  
icene@newinnhouse.co.uk

**Distribution:**

Hilary Rule  
hilanddel@gmail.com

**Thank you** to contributors to this month's edition. The deadline for August's Icene is 22nd July.

**STOP PRESS – Duxford Saturday Music Workshop taster session – Saturday 1st July 11 am** See p 10

**Ickleton Village Local Services and Regular Events** – see the back two pages.

**Twelfth Night** The Festival Players - Saturday 22nd July - book your tickets now. See page 3.

**Social Club and 'Sunday Socials'** during the month – see page 3.

**Ickleton Society** Historic Duxford guided tour - Sunday 30th July - see page 4

**Ickleton Cricket Club** – Home fixture list and photos ...see page 8

**Another Glow-worm Walk** on Tuesday 4th July if you missed the first - see page 4

**Hinxton Garden Evening** – Friday 14th July – see page 10

### PARISH COUNCIL

Refuse collections during July

Tuesday	4 <sup>th</sup>	July	Blue Bin and Green Bin
Tuesday	11 <sup>th</sup>	July	Black bin
Tuesday	18 <sup>th</sup>	July	Blue Bin and Green Bin
Tuesday	25 <sup>th</sup>	July	Black bin

**Please Note**

Thriplow Household Recycling Centre is open between **8 am and 5 pm**, seven days a week. Entrance gates shut 10 minutes before closing time.

It is not necessary to book visits to the site. Visits using vehicles or trailers requiring e-permits will be registered by site staff on arrival at a HRC, as they were prior to the introduction of the booking system, with no requirement to book visits in advance.

For more information visit [www.cambridgeshire.gov.uk/directory/listings/thriplow-recycling-centre](http://www.cambridgeshire.gov.uk/directory/listings/thriplow-recycling-centre)

### Ickleton Parish Council meeting

Extracts from the meeting on 21st June 2023. Your attention is drawn to the following:

#### Traffic and Highways Issues

**Future IWM Duxford events:**

IWM Duxford – The Americans – 28th & 29th July

IWM Duxford 19 Squadron – 12th August

IWM Duxford Evening Air Show – 28th August

IWM Duxford Flying Finale – 8th October

## Planning Information

### For consideration

Reference: **23/02014/FUL**

Proposal: Demolition of existing bungalow and erection of one and a half storey dwelling on similar footprint.

Site address: 12 Church Street, Ickleton, Cambridgeshire, CB10 1SL

The Councillors unanimously object to the application on the grounds of the harm the proposals, if approved, would cause to the Church (Grade I listed), the Church's setting, Norman Hall opposite (Grade II listed) and the conservation area, with particular regard to the proposed height of the building and rear façade.

Reference: **23/02146/FUL**

Proposal: Installation of Photovoltaic solar panels on the pitched roof of Unit 5.

Site address: Abbey Barns, Duxford Road, Ickleton, Cambridgeshire

The Parish Council supports this application.

Reference: **23/00482/FUL**

Proposal: Construction of two bridges and all associated structures, ramped walkways, stairs, lifts, boundary wall, footway and cycle paths, lighting, utilities, construction access, construction compound, hard and soft landscaping works, planting, tree removal, earthworks, drainage infrastructure, surface water drainage features and all necessary enabling works and demolitions.

Site address: Wellcome Trust Genome Campus, Cambridge Road, Hinxton, Cambridgeshire

The Parish Council do not wish to submit any comment to planning regarding this application.

### Information only applications

Reference: **22/03797/CONDA**

Proposal: Submission of details required by condition 4 (Roof Covering) of planning permission 22/03797/LBC.

Site address: Haybarn between Craftsman Barn and Vine Cottage, Butchers Hill, Ickleton, Cambridgeshire, CB10 1SR

### Planning Decisions

Reference: **23/00880/HFUL**

Proposal: Two-storey side and rear extension, new front porch and pitched roof to existing side extension.

Site address: 39 Church Street, Ickleton, Cambridgeshire, CB10 1SL

Permission granted.

Reference: **23/00614/HFUL**

Proposal: Single storey side link extension with one and a half storey rear extension and new rear dormer, front porch canopy.

Site address: 68 Abbey Street, Ickleton, Cambridgeshire, CB10 1SS

Permission granted.

### Greater Cambridge Partnership – making connections update

Information can be found by visiting [www.greatercambridge.org.uk](http://www.greatercambridge.org.uk)

### East West Rail community drop-in events

A drop-in event will be held at Harston Village Hall on the 26th of June 2023 2-8pm for members of the public to attend.

**Leanne Smith - Parish Clerk, E-mail: [clerk@ickleton-pc.org.uk](mailto:clerk@ickleton-pc.org.uk)**

### VISITING BELLRINGERS

Wednesday 12<sup>th</sup> July 2.00 - 3.30 pm and Thursday 27<sup>th</sup> July 9.45 - 10.45 am

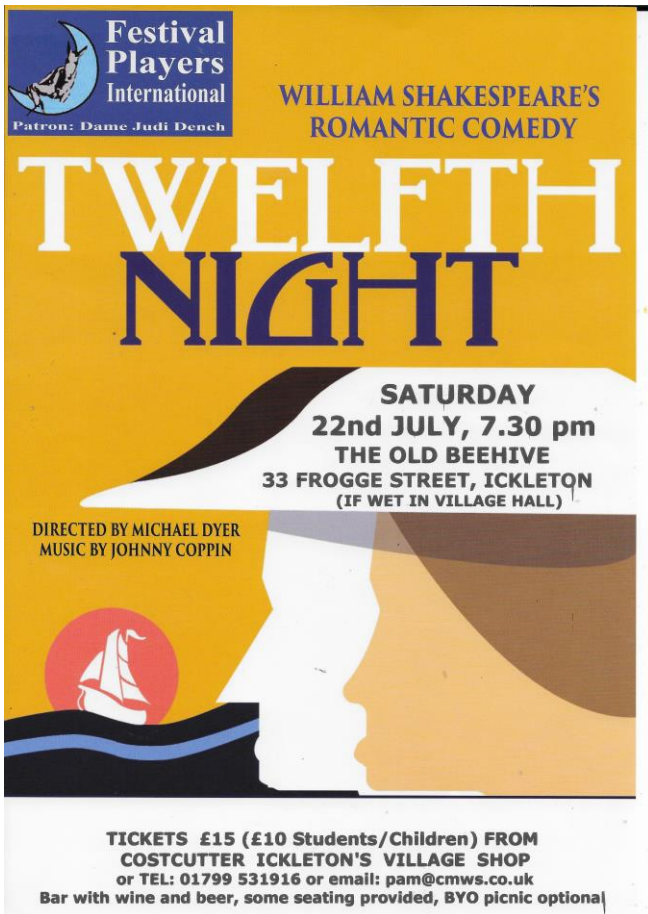
**David Lilley**

### THANK YOU

The Pimms and Strawberry event at 66 Frogge Street last month raised **over £600**.

The money has been split between the Red Cross Ukraine Appeal and Ickleton church funds. Many thanks to those who bought tickets and those who made donations.

Piers and Liz Carter



## "IF MUSIC BE THE FOOD OF LOVE, PLAY ON"

This great romantic comedy has all the ingredients for another engaging Shakespeare performance from Festival Players International, the UK's prime all-male touring company. In a colourful, costumed staging, brought to you with the Players' customary energy, clarity, and professionalism, this tale of the pursuit of love hampered by disguise, mistaken identity, and a great deal of boisterous and hilarious trickery, is assured to entertain.

The outdoor performance held here last year was so popular we will keep our fingers crossed for good weather and hold it in the garden of The Old Beehive, Frogge Street again (parking at the village hall). If the sun gods are against us we will retreat to the village hall. Some seating in the garden will be provided, but please bring your own, along with a picnic, if you wish to. There will be a bar for wine, beer and soft drinks.

## SOCIAL CLUB JULY DATES

### FRIDAY & SATURDAY

Club open from 8.30 pm

### SUNDAY LUNCHTIME DRINKS 12 – 2 pm

1st and 3rd Sunday of every month

### Sunday 2nd July

Wimbledon is upon us. Come and enjoy a glass of Pimms and cucumber sandwich, plus our usual offerings.  
Last orders 1.45 pm.

### SUNDAY SOCIALS

Every Sunday evening 7.30 to 10.30 pm  
All welcome. Guests £1

### MONDAY FIVE O'CLOCK CLUB

Every Monday 5pm to 7 pm  
Drinks with friends and neighbours

### We are a members club.

### Annual Membership fees are:

Under 65's £10

Seniors £5

Guests £1

After a very busy June we thank all who came to the Social Club. It may have been your first visit, or your first visit for a while. The Social Club is a wonderful village asset and is completely run by hard working Volunteers. We thank you for supporting our efforts.

## ICKLETON SOCIETY

### Tour of historic Duxford, Sunday 30 July, 2 – 4pm

We have several places left on our tour of historic Duxford at the end of the month. Please contact Fiona Rose via [fionarose@yahoo.co.uk](mailto:fionarose@yahoo.co.uk) if you'd like a place.

Duxford is a village many of us drive through every day but you may know little about the history and human stories within this neighbouring village. The Ickleton Society has organised a guided tour which will focus on the two churches and take in the various schooling sites and the nine village pubs and ale houses. Mention will be made en route of famous people who have visited or inhabited in the village, the C20 development after the arrival of Norman de Bruyne, the IWM, and the odd quirky story on the way. Refreshments will be served at half time in St Peter's Church (tea or coffee and a slice of homemade cake).

We'll be walking a route of around 1 mile with the opportunity for everyone to sit down on two occasions (if required) and plenty of time for questions and audience interaction. The tour is exclusively for the Ickleton Society, tickets are £15 per person which will be divided equally between St John's and St Peter's as a fundraiser. Our experienced guide will be Adrian Powter, volunteer with the Churches Conservation Trust in the Cambs/Herts/Beds area. If you need a lift to the tour then this can be arranged.

### Duxford History Society and talk about World War 2 POW camps

The Duxford History Society launched in November last year and it is thriving. Membership is free with the Society funded by donations collected at its meetings. You can join online from its website [www.duxfordhistorysociety.org](http://www.duxfordhistorysociety.org). Meetings are on the first Monday of each month from 10am to 12 noon with a coffee break halfway through, in the Small Hall at the Community Centre.

I'm very pleased to have been asked to give a talk at their next meeting on Monday 3 July about the POW camps that were in our area during and immediately after World War 2. I'm sure the Society would welcome new members or visitors from Ickleton.

**A Stroll Through the Hundred Parishes.** We're very grateful to Ken McDonald for giving us a talk after our AGM last month describing the development of the walk routes that can be downloaded from [www.hundredparishes.org.uk](http://www.hundredparishes.org.uk) with many wonderful photos of the area's rich heritage and things we can look out for on the walks.

**Committee.** Welcome to our new Committee members Sarah Webb and Jo Hancock. Sarah is now our Secretary. They will both be great additions to our Committee.

**Village Welcomes.** Elaine Statham has been doing the Welcome visits to people who have come to live in the village, for a number of years now. Elaine is standing down and we're very grateful to her for providing this service which we know is much appreciated. **Clare Driver** is now doing the Welcomes. Please get in touch with Clare to let her know of any new neighbours. Email: [clare@domesticblissappointments.co.uk](mailto:clare@domesticblissappointments.co.uk)

Rachel Radford [rachelmradford@btinternet.com](mailto:rachelmradford@btinternet.com)

## WETLANDS WALKS

### Glow-worm walk – and another walk if you missed it – see below

The glow-worm walk was fully booked, and was a great success, in that as soon as we set off from the wooden bridge towards the wetlands, we saw glow-worms at the edge of the path. We didn't actually see any more elsewhere, until the Ickleton contingent, returning home, saw one right next to the railway crossing. Iain Webb from the Wildlife Trust would be very interested to hear about any other sightings in and around Ickleton. If you see something that looks like a little green LED glowing in the dark, please let Iain know when and where you saw it, by email at [Iain.Webb@wildlifebcn.org](mailto:Iain.Webb@wildlifebcn.org).

**Another glow-worm walk on Tuesday 4th July** Meet at 10 pm on the wooden bridge.  
Book via Jackie on [jls1004@cam.ac.uk](mailto:jls1004@cam.ac.uk)

### Wildlife walks

The summer season of walks continues weekly on Wednesday lunchtimes until the 19<sup>th</sup> of July. Meet at 12:00 on the wooden bridge between the wetlands and the main campus, for an hour of wildlife exploration. The walks will be led by Iain Webb from the Wildlife Trust.

The themes of the walks in July are as follows:

Wed 5<sup>th</sup> July Butterfly walk    Wed 12<sup>th</sup> July    General wildlife walk    Wed 19<sup>th</sup> July General wildlife walk

David Keating

## ICKLETON TALKS... for your diaries

We have arranged a set of six 45-minute *Ickleton Talks* to be given on a range of fascinating subjects, by distinguished guest speakers.

Each talk will be followed by a discussion on the issues raised.

**Full details are in the box below..** Please make a note of the dates in your diary.  
Suitable for all ages from teenage upwards. We hope you will join us in this exciting venture...

Best wishes

**Graham Fagg & Hugh Molloy**

# Ickleton Talks

Six 45 minute talks on diverse matters of great interest,  
given by distinguished speakers

Wine/soft drinks provided.

**Sept 14th**  
2023

**The NHS: illustrious past, troubled present,  
does it have a future?**

Professor Martin Roland, University of Cambridge

**Nov 9th**  
2023

**The Melting Planet:  
Why the British Antarctic Survey is Important.**

Steve Marshall, British Antarctic Survey

**Jan 11th**  
2024

**Local Lives Matter:  
The Role of Local Government.**

Cllr Peter McDonald. Cambridgeshire County Council

**Mar 14th**  
2024

**Public Opinion and Gender:  
New consensus or continuing battleground?**

Professor Jackie Scott, University of Cambridge

**May 9th**  
2024

**What is Britain's Monarchy for?**

Dr Sean Lang, Anglia Ruskin University

**July 11th**  
2024

**Great Bardfield artists: The Second Wave...**

Tristan Molloy, retired Curator & Arts Officer

**Free Admission - Cash Donations: all profits to**

**MACMILLAN  
CANCER SUPPORT**

Ickleton Village Hall - Thursdays, 7:30pm



# GREAT CHESTERFORD & DISTRICT GARDENING SOCIETY

(Affiliated to the Royal Horticultural Society)

Chair - Pauline Gale

The Society, covering local villages including the Chesterfords, Icketon and Hinxtton organises meetings, talks, outings and events for those interested in gardens & gardening. New members and visitors always welcome.

**Next meeting**                      **Wednesday 5th July 8 pm Ickleton Viilage Hall**

**DROUGHT TOLERANT PERENNIALS**

**Speaker: Stephen Edney** - Gold Medal Winner at Chelsea. Former Head Gardener at The Salutation in Kent and currently setting up his own nursery specialising in perennials, dahlias and exotics.

*Competition subject: A rose - any type*

## June Meeting

Zsuzanna Serer set up the online company *Spicesotic* selling tropical plants and orchids online. Originally from Hungary and with a degree in Horticulture and Agronomy, Zsuzanna ensured full audience participation from the beginning of her talk entitled *A History of Growing Tropical Plants in the UK*.

Discussing those that we all consider tropical – orchids, pineapples, Agapanthus, spices, coffee and tea, Zsuzanna drew our attention to our frost hating common summer plants and vegetables which were originally regarded as tropical. Plant Hunters, the Victorians love of the orangery, and care of tropical plants in the home were all seamlessly woven into the narrative. Another excellent speaker!

**Summer Outings** The last date arranged - in July - to Great Thurlow Hall. Look out for details

**Best Bloom Competition** June 2023

1<sup>st</sup>: Penny Bull (Peony)    2<sup>nd</sup>: June Woodward (Iris)    3<sup>rd</sup>: John Macdonald (Rose)

**Christine Greet**

## CHURCH NOTICES

Vicar	Rev Lydia Smith	revlydiasmith@gmail.com
Churchwarden	Jenny Duke	jenny@jennyduke.co.uk
Lay Minister	Derek Munday	llm.munday@btinternet.com

For details of joining for prayer, worship, study, and community life, see: [www.hinkledux.com](http://www.hinkledux.com)

In emergency please telephone Jenny Duke.

## Church Services for JULY

Sunday	2nd	8.00 am	Holy Communion	WHITTLESFORD
		10.00 am	Parish Communion	ICKLETON
Sunday	9 <sup>th</sup>	8.00 am	Holy Communion	HINXTON
		10.00 am	All Age Service and Blessing of Animals	ICKLETON
Sunday	16 <sup>th</sup>	8.00 am	Holy Communion	DUXFORD
		10.00 am	Parish Communion	HINXTON
Sunday	23rd	8.00 am	Holy Communion	ICKLETON
		10.00 am	Parish Communion	DUXFORD
Sunday	30 <sup>th</sup>	10.00 am	Parish Communion	WHITTLESFORD

**Complines** 7 pm on Tuesdays at Duxford and Thursdays at Hinxtton    [www.jennyduke.co.uk](http://www.jennyduke.co.uk)

**Discussion Group** on Thursdays in person and online 7.45 pm    Email: [hinkleduxpa@gmail.com](mailto:hinkleduxpa@gmail.com)

**Prayers for peace** in Ukraine - Fridays at 12 noon at Hinxtton



## **YOUTHINC summer gathering in the meadow**

Our neighbouring church youth groups are meeting together on July 16th 4.30-6.30 in Ickleton. Young people aged nine years old and upwards and their families are invited to join us. Contact jenny duke [youthincambs@gmail.com](mailto:youthincambs@gmail.com) or Lydia for further details

## **CALLING ALL CYCLISTS and WALKERS... date for your diary: Saturday 9th September**

Every year there is an opportunity to visit local churches and raise money for our local historic churches.

Join the annual RIDE AND STRIDE and get sponsored to visit beautiful churches and chapels by bike, foot, horse or whatever way takes your fancy.

All money raised will be shared between the Cambridgeshire Historic Churches Trust and your chosen church.... ICKLETON OF COURSE! will help to repair and maintain our amazing buildings.

**Jenny Duke**

## **Treasuring our treasures**

What do the Humber bridge, the Feathers Hotel in Ludlow and St Peter's Church, Duxford have in common? They are all grade I listed buildings.

In July it will be 75 years since the 1947 Town and Country Planning Act came into force, which (amongst other things) established the modern system of listed buildings. The original list was a response to the widespread bomb damage of the Second World War. It identified those buildings that could or should be salvaged and protected in the post-war construction boom.

Since its beginning, the list has grown to around 400 000 entries and includes a curious range of structures: 800 windmills, over 20 petrol stations and a rocket. Only a tiny fraction of the buildings listed - 2.5% - are grade I (that's those of exceptional interest). And of these it's estimated that 4000 are (or have been) places of worship.

In the three Hinkledux parishes there are 6 current or former places of worship that are listed. There are St Peter's and St John's churches in Duxford (both grade I) plus the chapel (grade II and now changed to residential use); there's St Mary and St John church in Hinxton (grade II\*) and in Ickleton, St Mary Magdalene church (grade I) as well as the cemetery chapel (grade II). Duxford Chapel, in spite of its name, is in the neighbouring parish of Whittlesford.

These buildings are treasures: not just because they are beautiful but because they hold so many great stories – the stories from the past and the stories of our lives. However, neither the Church of England nor the government gives us any help to care for them. Instead, the responsibility rests with the local church community and with all of us who live in these villages and love these wonderful landmarks.

As villagers, there are ways to help us secure the future for these buildings. You can join a Friends group: Hinxton has one such group already, Ickleton's group is just getting started and Duxford's group is at the early stages of development. Watch out for more details.

And you can attend one of our fundraising events. On Friday 7 July at the Rectory there's a garden party to raise funds for *St Peter's roof project*. And on Friday 14 July the *Friends of Hinxton Church* holds its annual garden party. Look out for posters or contact [hinkleduxpa@gmail.com](mailto:hinkleduxpa@gmail.com) for details of each of these.

Thanks for reading this and for your help. Best wishes **Lydia**

## **DUXFORD PRIMARY SCHOOL Put in your diary...**

### **AN INVITATION !**

To everyone who kindly donated to the school, pre school and DX after the fire and to all our neighbors who have put up with the disruption and noise over the last 2 years  
We would like to invite you to our

### **OPEN DAY**

Come and celebrate the completion of our rebuild on **Sunday 10<sup>th</sup> September**  
**10am – 2 pm**

Reverend Lydia will hold a service in the hall at 10.00 am  
and hopefully Saturday Workshop will be performing in the afternoon

Refreshments available

We look forward to seeing you and showing you round our new classrooms!



## ICKLETON CRICKET CLUB

Many Thanks to all the volunteers of Ickleton Cricket Team for a Brilliant VP day with excellent Teas made and donated by Trevor and an incredible raffle for a helmet donated by Waz Mugal - won by Peter Bates



Here are a few pics from VP Day

### Notices

We would love to hear from anyone wanting to be involved with the club or ex cricketers, even if you don't want to play. We also need volunteers, even ad hoc, to help mow the cricket square for example - even one hour is so helpful.

We welcome the new club secretary Marian who moved into the village in February.

Congratulations to Nick Brown who played his 100<sup>th</sup> game.

Congratulations to Ian Curtis on the safe arrival of his new baby Isabel, the same week as he scored a century.

Thank you to <https://www.cloverleyslamb.com> for the delicious lamb donated for an after match BBQ. Thanks to Mark Laffaty for the great music.

**Clare Driver**



## Home Fixtures in July

Friday	7 July	6pm	Lions	v	Highgate Taverners
Saturday	8th July	1pm	1st XI	v	Coton 1st XI
Wednesday	12th July	6.30pm	1st XI	v	Abington 1st XI
Saturday	15th July	1pm	2nd XI	v	Birchanger 2nd XI
Wednesday	19th July	6.30pm	2nd XI	v	Linton Village Midweek XI
Saturday	22nd July	1pm	2nd XI	v	Eldon 2nd XI
Wednesday	26th July	6.30pm	1st XI	v	Wratting Lions
Saturday	29th July	1pm	1st XL	v	Cambridge NCI 2nd XI

## MAH JONG TUITION

The oriental links and rituals lend the game of Mah Jong an air of mystique, however the rudiments of play are surprisingly easy to master and it is not unusual for a beginner to do quite well. Playing Mah-Jong has been found effective in improving short-term memory, attention, and logical thinking.


If you are interested in playing Mah Jong and not sure where to start, or if it is for you, I can offer lessons – time by mutual arrangement. I charge £10 an hour which covers 1, 2 or 3 players.

All proceeds donated to *Sophie's Fund*, a charity administered by the Saffron Walden Citizens Advice Bureau, which aims to help those in financial difficulty, and who are local to Uttlesford.

Contact **Chris Greet** at [tygreet@gmail.com](mailto:tygreet@gmail.com)




**Did you know**




**Hypertension**  
Can be an accelerating factor of hearing loss in adults

**Hearing loss** is the third most common physical condition after arthritis & heart disease.




Worldwide, over **half a billion people** younger than 65 have some degree of hearing loss

**Current smokers** have a **70% higher risk** of having hearing loss than non-smokers




**70% of diabetics, 50-69 years old, have high-frequency hearing loss**



When was your **blood pressure** checked?  
Would you take a **pill for pain**?  
What have you done for **your hearing**?

**Can we help you with your hearing?**


**01223 661399** [www.angliarhearing.co.uk](http://www.angliarhearing.co.uk)  
Suite 3 Grain House, Mill Court, Great Shelford



**angli-EAR**  
Hearing & Tinnitus Solutions

# Boatman Furniture

Bespoke fitted and freestanding furniture



Kitchen - Dining  
Living - Bedroom  
Media - Study - Library  
Wooden signs

[info@boatmanfurniture.co.uk](mailto:info@boatmanfurniture.co.uk) (01799) 530230  
[www.boatmanfurniture.co.uk](http://www.boatmanfurniture.co.uk)

## HOLIDAY COTTAGES TO LET - NORTH NORFOLK



Two adjoining cottages in the village of Burnham Market, one sleeping 6 and the other 4. To let separately or together. Two miles from Holkham, 1.5 miles from the coast, enclosed south-facing garden, off-street parking. Lovely beaches, golf courses, bird watching etc!

Christine Rhodes - 07831 627678

[burnhammarketcottages.co.uk](http://burnhammarketcottages.co.uk)



**01223 832 928**  
**www.Rothwells.biz**

**Working in Ickleton since 1993.**  
**Carpets, Upholstery, Stone Floors & Rugs.**

Rothwell's has been in business since 1993.  
 We're an honest local family firm.  
 Our large truck mounted machines mean more cleaning  
 & drying power for the best results possible.  
 Members of both the NCCA and TACCA.  
 We will move the furniture for a thorough clean.  
 100% satisfaction or it's FREE.  
 Call Oliver and Max Campbell for expert help today.

## ADVERTISING

The ICENE goes to every house in the village and is widely read. Rates per monthly issue:  
 £6 per eighth of a page  
 £12 per quarter of a page  
 £24 per half page

Copy required by 12<sup>th</sup> of each month for inclusion in next month's edition please.

E-mail: [clerk@ickleton-pc.org.uk](mailto:clerk@ickleton-pc.org.uk)

## DUXFORD SATURDAY WORKSHOP Taster morning on Saturday 1st July 11 am - 12.15

### Free Musical Instrument "Taster Morning" at Duxford Primary School, St John's Street

Would you or your child like to play a musical instrument, but you aren't sure which one? Would you like to try out one or more instruments before making up your mind?

***If so, Duxford Saturday Workshop Taster Morning is for you!***

At this event, experienced tutors and players will help you to have hands-on, practical experience of several instruments. They are available to answer your questions and to help you to decide which instrument is the one for you.

This is completely free. There is no need to book in advance, and you do not have to be a current member of the Music Workshop to come along - so just arrive and have a go!

Of course, if you decide to join us for the next Workshop year (beginning in September) you will be most welcome. If you need an instrument, items can often be borrowed from our hire stock for the year at low cost (currently £25 per year), meaning that it is possible to gain tuition and experience of playing, for a very modest outlay indeed.

The Workshop takes place at Duxford School **on Saturday mornings during term-time** and is very much about enjoying music-making in a supportive and fun environment. All ages, abilities and experience levels are welcome, and we offer both ensembles and tuition to cater for a wide range of musical interests and tastes.

Instruments included in the Taster Morning are: *Violin, Viola, Cello, Flute, Oboe, Bassoon, Clarinet, Saxophone, Trumpet, Cornet, Trombone, Guitar and Ukulele.*

**For further info, see:** [www.duxfordsaturdayworkshop.org.uk](http://www.duxfordsaturdayworkshop.org.uk)  
 or Email: [director@duxfordsaturdayworkshop.org.uk](mailto:director@duxfordsaturdayworkshop.org.uk)

Peter Howarth, Duxford Workshop Management Team [phowarth@businessdevgroup.com](mailto:phowarth@businessdevgroup.com)

## HINXTON GARDEN EVENING Friday 14th July

The Friends of Hinxtton Church invite you to

**A Garden Evening at The Oak House July 14<sup>th</sup> 6.30 PM**

Raffle for The J Huntingdon Charity

Share your time with neighbours to support our village church building.

Tickets in advance: £10 each or £25 for the family.

Includes glass of wine and finger food (contributions of food welcome).

From: Kate Riley Email: [rileyca@eldoret64.plus.com](mailto:rileyca@eldoret64.plus.com)

Margaret Malcolm Email: [Margaretjmalcolm@gmail.com](mailto:Margaretjmalcolm@gmail.com)

Or on the gate £12 each and £25 family

## MEDICAL

## BLOOD DONATION

Dates for blood donation in the Village Hall: **Thursday 5 October**

**Martin Waters**

## ICKLETON Village

### Local Services

**COSTCUTTER Village shop** - Opening times: Mon to Sat 8 am - 7 pm. Sunday 9 am - 1 pm.

**Post office at the shop** - Opening times: Mon to Fri 8 am - 12 midday Sat - *now closed*

#### Post boxes - collection times

	Monday to Friday	Saturday
Bottom Butchers Hill; Coploe Rd/Grange road corner	9.00 am	7.00 am
Costcutter shop	11.30 am and 4.00 pm	11.30 am
Great Chesterford	latest 4.30 pm	12 midday
Saffron Walden Market Square	latest 6.00 pm	12 midday

---

#### HELP for dealing with Covid 19

The service is continuing for the time being. The names of helpers for any streets is available from me if you need.

Anne-Marie Hoare

---

**Village Hall Bookings** – Viliami Mila [v.mila68@outlook.com](mailto:v.mila68@outlook.com)

---

**Police** [reporting a crime, non emergency] Call 101

---

**Neighbourhood Watch** – Glynis Hammond [glynis.hammond@gmail.com](mailto:glynis.hammond@gmail.com)

---

**District & County Councillor** – Peter McDonald [Cllr.mcdonald@scams.gov.uk](mailto:Cllr.mcdonald@scams.gov.uk)

---

**Community Warden Scheme** – 07812 496001 - Anita Gilchrist@ageukcap.co.uk

---

**Speedwatch Team** – Terry Sadler [terrywsadler@btinternet.com](mailto:terrywsadler@btinternet.com)  
and Penny Fletcher [penny@penelopeannefletcher.co.uk](mailto:penny@penelopeannefletcher.co.uk)

---

#### Cambridge Mobile Library

The **third Wednesday** in each month (19th July) 12.45 - 1.15 pm. Now in Frogge Street by the bus stop. Books may still be PRE-SELECTED IN ADVANCE from the whole of Cambridge Libraries collection, and available to collect. To reserve, contact <https://cambridgeshire.spydus.co.uk> (free of charge).

---

#### Food Bank

The foodbank is a way we can share our food with those who don't have quite enough. Ickleton foodbank is given to John Huntingdon Centre <https://johnhuntingdon.org.uk/> in Sawston who arrange deliveries and collections for those who need it.

The emphasis is on hot drinks, soups, tuna, precooked rice, macaroni cheese, spaghetti hoops. Also cereals, (soft easy to eat) baby products, dog or cat food, toiletries. Please leave at the church in or next to the Food Bank box or call me for collection – thank you for your generosity.

The number of local clients being helped is now 500. Thank you to the village for their generosity.

**Clare Driver** [clare@domesticblissappointments.co.uk](mailto:clare@domesticblissappointments.co.uk)

---

**Food Aid** For anyone in Ickleton who wants to ask for food or other groceries (*in complete privacy*) please call Clare who will endeavour to fulfil your shopping list needs **Clare Driver**

## FOOD DELIVERIES

Generally - **Costcutter village shop** - ☎ 531181 and ask for a delivery.

**Milk** Fresh milk (bottles) – Monday, Wednesday and Friday. Martin of Plumb's Dairy (Linton)  
Tel: 01223 893033 info@plumbs-dairy.co.uk

**Meat** delivery – Thursdays – Clark & Son [Sudbury] 01787 319330 sales@clarkandsonmeats.com.

**Fresh fish** van delivery - Monday afternoon - call or text Andy 07773 275134

**Fruit and Veg** delivery

Fisher and Woods ☎ 581620 sales@fisherandwoods.co.uk

Walden Organics (Rob) waldenorganics@btinternet.com

**Fish and Chips** (etc) - mobile van on Tuesdays 4.30 - 8 pm Village Hall car park  
Pre-orders only. Tel: 07787 603616 info@oceantree.co.uk

---

## Regular Events and Meetings

**Coffee Mornings** Tuesdays 4th July and 18th July 10.30 - 12 at the church

All welcome

We are currently sharing coffee morning proceeds between the church and various charities.

**The Coffee Morning Team**

---

**Sunday Socials** at Ickleton **Social Club** **Sunday nights** 7.30 - 10.30 pm See page 3 **Tim Pavelin**

---

**Social Club** (bar open) Fridays and Saturdays from 8.30 pm

Sundays 2nd and 16th 12 – 2 pm.

Mondays 5 – 7 pm

See page 3

---

**Parish Council Meeting** **Wednesday 19th July** 7.30 pm Village Hall

---

**Bowls** No bowls in the summer months.

Restarts in October on Thursdays 11 am - 1 pm and 2 - 4 pm in the Village Hall

**Martin Waters**

---

**Froglets** **Mondays** 9.30 - 11.30 am Village Hall

**Anne-Marie Hoare**

---

**Great Chesterford & District Gardening Society** – on the **first Wednesday** in the month, Village Hall  
Talk – 5th July See page 6

---

**PUBLISHED BY ICKLETON PARISH COUNCIL**