

# I C E N E

## B U L L E T I N

[www.ickleton.org.uk](http://www.ickleton.org.uk)

[www.ickletonparishcouncil.org.uk](http://www.ickletonparishcouncil.org.uk)

## MARCH 2025

**Editor:**

John Williams  
[icene@newinnhouse.co.uk](mailto:icene@newinnhouse.co.uk)

**Distribution:**

Hilary Rule  
hilanddel@gmail.com

**Thank you** to contributors this month.. The deadline for the April 2025 Icene is 22nd March.

**Ickleton Village Local Services and Events Calendar** (regular and one-off). See the back two pages.

**Souper Saturdays** – on 8th and 29th March 12 - 2 (see p. 5)

**Social Club and Ickle-Gigs** Openings and times, and events - see pages 9 and 10.

**At Saffron Hall – ‘UPRISING’** on *Saturday 15th March - 3 pm and 7 pm, and Sunday 16th - 3 pm.*  
An exciting new Climate Change musical/opera which looks at the state of the world through the eyes of the young. By leading composer Jonathan Dove. Performance time 2 hours.  
Professional soloists; Chorus: adults from local choruses, and 60 pupils from Sawston Village College and Saffron Walden County High School; Royal Scottish National Orchestra. Don't miss it!  
See page 7 for ticketing and more info. Book now as tickets are going fast!

**Ickleton Art and Literature Exhibition** Saturday 15th, 10 am - 5 pm, Sunday 16th, 11 am – 4 pm. Over 100 works of art and writing. Come and see. Book launch 4 pm Saturday. Free. At the Social Club. See p. 9.

## PARISH COUNCIL

Refuse collections during March

Tuesday	4 <sup>th</sup>	March	Black bin
Tuesday	11 <sup>th</sup>	March	Blue and Green bins
Tuesday	18 <sup>th</sup>	March	Black bin
Tuesday	25 <sup>th</sup>	March	Blue bin only

**Green bin** collections are on the winter four-weekly cycle. However you can put **food waste** in the **BLACK** bin (but not garden waste).

Thriplow Household Recycling Centre is open between 8 am and 4 pm, seven days a week. Entrance gates shut 10 minutes before closing time. Booking is unnecessary. Visits of vehicles or trailers requiring e-permits will be registered by staff on arrival - no need to book in advance.

For more information, please visit: [www.cambridgeshire.gov.uk/directory/listings/thriplow-recycling-centre](http://www.cambridgeshire.gov.uk/directory/listings/thriplow-recycling-centre)

**Save the date** **Annual Parish Meeting** - to be held on **Tuesday 6th May** 2025, starting at 7pm, in the Gordon Woolhouse meeting room at the Village Hall. Refreshments will be available.

**Play Area Equipment** The Parish Council has arranged for the swings in the children's play area to be replaced, with work scheduled to take place on 3 and 4 March 2025. Please note that there will be some disruption in the park on these days. Approximately a week after the work takes place, an inspector will visit the park to sign off that the new swings have been safely installed. Only after this inspection has taken place should the swings be used. We ask that during this time users of the play area refrain from using the swings and that children using other areas of the play area remain under supervision. There will be a cordon in place around the swings area which will be removed once the inspection has taken place.

**Anglian Water** Anglian Water hope to restrict tankering to 6 am to 11 pm daily and are still investigating the issue. CCTV has shown water ingress, however AW have no budget for significant works. SCDCllr McDonald will ask MP Pippa Heylings to approach the Anglian Water CEO for a meeting.

**Ickleton Parish Council** Extracts from the Parish Council meeting minutes held on 19<sup>th</sup> February 2025. The Parish Council wishes to draw your attention to the following:

## **Land and premises**

Planning information from South Cambridgeshire District Council (SCDC)

Comments to be returned to SCDC relating to planning applications:

**25/00129/FUL** Proposal: Erection of a detached dwelling, garage, office/store and greenhouse, with access, landscaping and air source heat pump Site address: Land at Little Farm Barns 8 Mill Lane. Extension for comment granted until 21st February 2025. A vote was taken. Four Councillors voted to support, one voted against and two no comment. It was resolved that the Parish Council support this application by a majority.

**24/02788/FUL** Proposal: Two storey extension to Unit 4 and the erection of 2no. new building for office/research and development uses (Use Class E) together with associated car parking, infrastructure and landscaping. Site address: Abbey Barns. Amended application. Comments by 5th March 2025. It was resolved that the Parish Council respond to this application reiterating our position, which was broadly supporting the proposals with some reservations regarding traffic issues.

SCDC planning decisions:

**24/04451/HFUL.** Site: 8 Butchers Hill. Proposal: Single storey rear extension, conversion and extension of existing garage into habitable living space and internal alterations. Status: Application Permitted

**24/04452/LBC.** Site: 8 Butchers Hill. Proposal: Single storey rear extension, conversion and extension of existing garage into habitable living space and internal alterations. Status: Application Permitted

**24/04583/HFUL.** Site: 34 Butchers Hill. Proposal: Single storey side and rear extension. Status: Application Permitted

Comments to be returned to SCDC relating to tree works:

**25/0061/TTCA** Site: 9 Abbey Street. Proposal: Fig tree - Fell to ground level Acacia tree - Reduce crown by 1.5 metres and remove branch hanging over roof and wall. Walnut tree - Reduce height by 5 metres, reduce remaining crown by 1.5 metres and Remove lower branches touching boundary wall. Walnut tree - Reduce height by 4 metres, Reduce remaining crown by 1.5 metres and Remove lower branches touching boundary wall. Comments by 25th February 2025. The Parish Council resolved to comment that walnuts should be pruned after mid-summer and only reduced at most by 20%.

## **Roads and Highways**

**Railway Bridge** SCDCllr McDonald will ask the Highways department at each County Council to liaise with each other concerning improved signage. He will also contact the Highways green team to ask them to cut back shrubs and trees impinging visibility of signs. Ickleton and Great Chesterford Parish Councils will send a joint letter to the Highways Authority in each County.

**New Road junction with A1301** – Some changes have been made to the junction but it still requires improvement. SCDC Peter McDonald has asked Cambridgeshire County Council to investigate the issue.

**LED lights rollout** - LED rollout for street lights in Ickleton due in March 2025. The replacement lamps will direct light onto road surfaces and there will be less spillage or light pollution.

## Reports from District and County Councillor Peter McDonald – Extracts.

### South Cambs District Council

#### Local government reorganisation

On 16 December the government published a White Paper called English Devolution which included a push towards conversion to unitary councils in two-tier authority areas such as Cambridgeshire. In this region our two tiers are Cambridgeshire County Council and the district councils. The White Paper included a requirement for local authorities to submit proposals for reorganisation at the end of March. A letter from the Secretary of State for Housing, Communities and Local Government has been promised to define the expectations from government in more detail. In the meantime, there have of course been many conversations between the various branches of local government. The government has indicated that it will be adopting a phased approach to this reorganisation with an initial focus on areas where the current system is clearly failing. On this basis, and given the focus on delivering local growth, it seems unlikely that Cambridgeshire will be selected for early reorganisation. However, little is known for certain at this stage.

#### Four-day working week consultation

The Council began a consultation on the four-day working week on 27 January which runs for eight weeks until 23 March. The aim is to gather data from residents and businesses on how the quality of the Council's services has changed since January 2023, when the trial of the new working practices began. This will be used alongside the other extensive sources of data on the Council's costs and performance to decide the next steps for this working practice. The aim of the trial was to improve value for money in the light of the difficulties in recruiting and retaining permanent staff, especially in the Planning service.

<https://engage.scambs.gov.uk/en-GB/folders/four-day-week>

### Cambridgeshire County Council

#### LED Street Lighting

Work started in earnest in the New Year to replace the majority of our existing streetlighting with newer, more efficient LED (light emitting diode) lights – this can cut energy consumption from street lighting by more than half.

The full report from the District and County Councillor can be found at appendix A on the Parish Council meeting minutes for February 2025.

Please visit <https://www.ickletonparishcouncil.org.uk/> where you will find the full meeting minutes.

Information on the following can be found in the Community Noticeboard section:

Highways events

Link to a Government consultation on strengthening the standards and conduct framework for local authorities in England.

Invitation link to have your say on police funding for 2025-2026.

Urban & Civic Winter Newsletter.

Other public notices.

**Barbara Benn - Parish Clerk** E-mail: [clerk@ickleton-pc.org.uk](mailto:clerk@ickleton-pc.org.uk)

### Gerry Rupert Thank you

Elaine would like to thank friends and neighbours who sent very kind messages of condolence, cards, and flowers on the sad passing of her husband, Gerry.

It was a huge comfort to see so many people join her at Ickleton Social Club on Saturday 1st February to celebrate Gerry's life. Thank you for your generous donations for the Dog's Trust in Gerry's memory.

**Elaine Rupert**

**Cambridge Half Marathon** on Sunday 9th March....Paula Grant of Butchers Hill is running in this and asks if anybody would like to sponsor her for donations to cancer care charity Maggies.

<https://www.maggies.org/>

Her email is: [paulaharrietgrant@hotmail.co.uk](mailto:paulaharrietgrant@hotmail.co.uk)

## CHURCH NOTICES

Vicar                                      Rev Lydia Smith                                      revlydiasmith@gmail.com  
 Churchwarden                              Jenny Duke                                      jenny@jennyduke.co.uk  
 Lay Minister                                      Derek Munday                                      llm.munday@btinternet.com

For details of joining for prayer, worship, study, and community life, see: [www.hinkledux.com](http://www.hinkledux.com)  
 In emergency please telephone Jenny Duke.

### CHURCH ELECTORAL ROLL 2025

This year there has to be a completely new Church Electoral Roll. This means that everyone who is currently on the Roll, and those who wish to be, must complete a new application form. There will be a notice about this on the board in the Church porch from 13th March. I shall then deliver forms to those who are currently on the Roll but there will also be forms on the central table in the Church for others to help themselves. All completed application forms should be returned to me or put through my door.

**Frances Payne** (Church Electoral Roll Officer)

### Church Services for MARCH

Sunday	2nd	10.00 am	Parish Communion with Sunday Club	<b>ICKLETON</b>
Wed'nsday	5 <sup>th</sup>	7.30 pm	Ash Wednesday service	HINXTON
Sunday	9 <sup>th</sup>	8.00 am	Holy Communion	HINXTON
		10.00 am	All age Service	<b>ICKLETON</b>
Sunday	16 <sup>th</sup>	8.00 am	Holy Communion St Peter's	DUXFORD
		10.00 am	Parish Communion	HINXTON
Sunday	23rd	8.00 am	Holy Communion	<b>ICKLETON</b>
		10.00 am	Parish Communion St Peter's	DUXFORD
Sunday	30 <sup>th</sup>	10.00 am	Mothering Sunday joint service	<b>ICKLETON</b>

Further details available on [www.hinkledux.com](http://www.hinkledux.com)

**Complines** 7 pm at Duxford St Peters on Tuesdays and Hinxton on Thursdays

**Prayers for peace** at Hinxton on Fridays at noon

**YOUTHINC** Sunday March 2nd and March 30th Ickleton Village Hall 5 - 6.30 pm

### From Rev Lydia

#### Lenten Stuffle

In 1599 the Elizabethan writer Thomas Nashe published his last work, *Nashe's Lenten Stuffle or The Praise of the Red Herring*. Its subtitle gives a clue as to the content: there's lots about fish and fishing, presented in Nashe's signature rambling style. Nashe was hiding out in Great Yarmouth, at the time a major port for herring fishing. He had got into trouble over a satirical play that dangerously mocked Queen Elizabeth I. The pamphlet is both a thank you to Yarmouth who had given him refuge checking whether he was acceptable society again.\*



the people of  
and a way of  
in London

*Lenten stuffle* meant the kind of food appropriate for Lent, when most people gave up eating meat. But as he tells his fishy story, Nashe also has in mind a piece of legislation that mandated fish eating on Wednesday as well as Friday not just in Lent but throughout the year. The 1563 Navigation Act was designed to strengthen the English fishing industry (and via this, the Navy) rather than nudging people

towards religious observance and was often called *political Lent* for that reason. It was an Act that had helped Yarmouth, just as Yarmouth had helped Thomas Nashe.

This year, Lent begins on 5 March. Lots of us might take the opportunity to eat more healthily, whether that's less chocolate or more fish (or both). However, the traditional challenges are not simply to give up the things we love to eat, from biscuits to bacon, but to take up doing some good things. To set aside time to reflect on our priorities and to think of other people as well.

If you're looking for some inspiration, why not sign up to the Church of England's email reflections, Living Hope, or download the Everyday Faith app. The readings and reflections explore how we can have hope in times of frustration or uncertainty; the hope found in joining with others; the invitation to notice signs of hope around us; the courage to face reality and pursue a hopeful future; and the ways God transforms death into life at Easter. See <https://www.churchofengland.org/faith-life/what-we-believe/lent-holy-week-and-easter/living-hope-lent-reflections> for details.

### **Best wishes Lydia**

\* It didn't make much difference: by June 1599 Nashe's work was once again banned.

**Visiting Bellringers** Saturday 15<sup>th</sup> March 10.30 am - 12.30 pm. David Lilley

**PUB LUNCH** Tuesday 11th March 12.30 pm Red Lion, Hinxton

The Pub Lunch Club is running on every second Tuesday in the month at the Red Lion, Hinxton.

Pre orders to: [cjjonsmith@hotmail.co.uk](mailto:cjjonsmith@hotmail.co.uk) or by the Sunday before please. Menu at the pub's website: <https://redlionhinxton.co.uk/wp-content/uploads/2024/04/RLH-Menu-Spring-2024.pdf>

**SOUPER SATURDAYS** More village get togethers...

**Saturdays 8th and 29th March, and 5th April 12 noon – 2 pm** at the Village Hall

Homemade soup Delicious cakes Tea and coffee plus a raffle (in April)

In aid of the Arthur Rank Hospice, Froglets and another great charity. In April in aid of Shelter

**Anne-Marie Hoare**

### **WELCOMES**

**Sue and Marc Butler** have moved into Southfields from Little Chesterford and have friends already in the village helping them settle in. Sue is a bellringer and loves sewing, and they both enjoy walking and cycling and are playing Pickleball.

A safe arrival from the Stork...

Welcome to **baby Alana Molly** - a little daughter for **Jo and James** and a sister to **Rune** - a sweet addition to the **Kirk** family.

### **SEW CALM**

Much calm sewing (and crocheting) has been happening on the second and fourth Saturdays at Ickleton Social Club. No session on 8 March, but start again on 22 March - 10am - 12 noon.

### **A Thank you & an Ask from Ickleton Open Gardens**

Spring is just around the corner and over the next few months many of us will be starting to spend more time in our gardens with all the benefits and pleasures this brings. Remember to save the date for our popular Ickleton Open Gardens scheduled for Sunday 15th June, 11am – 5pm. 75% of proceeds from the event will go to our much loved and well used Village Hall and 25% to Tom's Trust, the UK's only charity dedicated to providing mental health support to children with brain tumours, and their families.

Thank you to the garden owners who have already kindly agreed to open their gardens. We'd love to have a few more gardens open, and we need lots of volunteers on the day so please get in touch if you'd like to do either. We couldn't undertake this event, and in the process raise a significant amount for charity, without the

generosity of our garden owners and volunteers. Many thanks also to our generous sponsors who are kindly supporting the event this year: Arkwrights, Hexcel, HSA & Co., NFU Mutual and Team Consulting. We really appreciate their support and interest.

And **now for the ask!...** we'd be most grateful for businesses to donate raffle prizes; a business can either donate an item or gift voucher, or we can purchase something for you to donate; in particular, we'd love to be able to offer a year's membership to the RHS or a year's subscription to a gardening magazine. We'll also need cakes on the day, plants for our plant stall & lots of volunteers on the day, for a shift of an hour or two, so please **get in touch with Pam Fearn** if you're able to help out: pam@cmws.co.uk or tel.

We'll keep you updated about the Open Gardens in ICENE and you can follow us on Facebook at <https://www.facebook.com/IckletonOpenGardens>. Thank you from the Ickleton Open Gardens Committee: Pam Fearn, Fiona Rose, Jo Hancock, Caroline Owen, Catherine Cocks and Lizzie Molloy.

## Ickleton Society

**Thursday 6th March, 7:30 pm** – Village Hall meeting room:

**'The River Cam, Chalk Streams and the Environment – Risks from Development'** - a talk by the Friends of the Cam.

The River Cam and tributaries are rare chalk streams being put at risk from over abstraction of the chalk aquifer by proposed and ongoing major developments and transport projects around. These will damage the chalk aquifer, river valleys and surrounding landscape unless realistic controls and mitigation are put in place quickly. The farming community and farm output will also be badly affected and production from the best farmland in the country outside the Fens will be reduced. This has significant implications for national food supply as well as the character of Cambridge and its surroundings.

All welcome, just turn up though places will be limited (first come, first served) due to capacity of the meeting room. Free to Ickleton Society Members. £5 for Non-Members with a glass of wine or soft drink included. Please note: this talk replaces the previously advertised one by Geoff Garrod, gamekeeper at Audley End, who is no longer able to make this date.

**Sunday 16th March, 10 am Annual Litter Pick** Meet on the Recreation Field by the Village Hall.

Join us for an hour of litter picking around the village. Just turn up. Everyone welcome, including children. Many hands make light work!

We'll provide gloves, bags, grabbers and high visibility jackets. Bring your own if you prefer. Bring secateurs if you'd like to cut ivy off trees on the rec.

With thanks to Ickleton Parish Council, the Village Hall Committee, the Wellcome Genome Campus and South Cambs District Council for their support.

**Saturday, 29th March, 3.30 pm, at the Cemetery, Brookhampton Street** (on the way to Hinxton)

**'More Stories from Brookhampton Cemetery** A Guided Walk & Talk' led by Ickleton's Emma Easterbrook

After a very popular tour last September, Emma will share a new set of stories about Ickleton's past residents buried in Brookhampton Cemetery.

Emma grew up and was educated in and around Cambridge. She was Chair of the Friends of Mill Road Cemetery, Cambridge, and has a life-long interest in social history. The afternoon will be rounded off with a hot drink and homemade cookies.

The event is free to Ickleton Society members and £3 for non-members. Places are limited and must be booked in advance...Contact Fiona Rose at [fionarose@yahoo.co.uk](mailto:fionarose@yahoo.co.uk) or telephone .

Deadline for booking a place is by Monday, 24th March.

## Upcoming events

**Saturday 19th April** – Easter egg hunt, and possibly a walk beforehand

**Thursday 8th May** – AGM and a talk by Murray Edwards: **King's College Chapel: Untold Secrets**

**Would you like to join our Committee?** Thank you so much for the responses to our request last month for volunteers. We still expect to have 1 or 2 more vacancies so, if you'd like to join us, we'd love to hear



from you. Committee meetings are once a quarter, very informal, with a glass of wine or juice to help things along. Please do get in touch with me or any member of the Committee.

**Rachel Radford**    rachelmradford@btinternet.com

## ICKLETON CRICKET CLUB



Ickleton women enjoyed their second ever competitive outing on Sunday 2nd February at the Cambridgeshire Cricket Women's soft ball tournament in Littleport. Sporting new, bespoke I.C.C. shirts they played two matches, with the results:

Sutton 228/4 v **Ickleton 251/3**      **City of Ely 267/4** v Ickleton 214/10

A win in just their third ever match is a testament to the skill, dedication, and enthusiasm of the squad. Plenty of records broken, and new ground forged – including Ickleton CC earliest ever win in a year!

We're excited to announce that the next generation of Ickleton Women cricketers are already in training, with the Under 11 Girls entering a soft ball league in the coming season.

Want to try cricket? Every player, Adult or youth, regardless of skill and ability is an asset to the club and we look forward to welcoming new faces in the coming season – it's a great way to meet people and get fit but mainly to have fun – and with The Ickleton Lion possibly being open for the summer we are all excited about the future of your Cricket Club.

[www.ickleton.play-cricket.com](http://www.ickleton.play-cricket.com)

INSTAGRAM @ickletoncc

FACEBOOK Ickletoncricketclub

**UPRISING – Don't miss it!** At Saffron Hall (the concert hall at Saffron Walden County High School)

**Saturday 15th March - 3 pm and 7 pm    Sunday 16th at 3 pm    Performance time 2 hours.**

Can one person make a difference? Horrified by the climate crisis, teenager Lola decides that she must fight for the future.

From acclaimed composer Jonathan Dove and writer April De Angelis, this new opera/musical looks at the state of the world through the eyes of the young.

They challenge the town which intends to destroy a forest to make way for a motorway, with inevitable consequences. Terrific music and drama.

Professional soloists, adult chorus from local community societies, and 60 pupils from Sawston Village College and Saffron Walden County High School, with the Royal Scottish National Orchestra.

Book now as tickets are going quickly!

**Tickets:** £16 to £40. Under 25's half price. Book via website: saffronhall.com or tel:

## **GREAT CHESTERFORD & DISTRICT GARDENING SOCIETY**

*(Affiliated to the Royal Horticultural Society)* Chair - Pauline Gale

The Society, covering villages including the Chesterfords, Ickleton and Hinxton, organises meetings, talks, outings and events for those interested in gardens & gardening.

New members and visitors always welcome. For further information contact the Chair.

**Next Meeting** Wednesday 5th March 7.30 pm Ickleton Village Hall

### **CLEMATIS**

*Speaker:* Peter Skeggs-Gooch - owner of Thorncroft Clematis - winners of 12 Gold Medals at Chelsea

*Competition Subject: Spring Shrub (one stem only)*

**Recent Meeting** A very well attended meeting to hear Paolo Arrigo, MD of Franchi Seeds UK - the oldest family run seed company in the world - take us through the history of vegetable growing, the seed industry and a whistle stop tour of Italy in vegetables. Who knew that Britain is the only country to grow parsnips? That the growth of wild fennel is attributed to Roman soldiers chewing fennel seeds? Or, during Covid the seed industry almost collapsed with a 60% increase in demand. An excellent and informative talk, then members had the opportunity to purchase a variety of Franchi seeds.

*Competition Subject: Spring Bulb*

1<sup>st</sup>: Steve G. Chionodoxa 2<sup>nd</sup>: Ned T. Crocus 3<sup>rd</sup>: Pauline G. Snowdrops.

**NOTE: AGM AND MEMBERSHIP RENEWAL WEDNESDAY 2<sup>ND</sup> APRIL**

**Christine Gee**

## **Wetlands Wildlife walks**

On February's walk the song birds obviously thought spring was coming. We saw and heard a blackbird, robin and wren. The wren was very cheeky, landing next to us on the bridge before darting down to the riverbank. We also heard a mistle thrush up in a tree somewhere. Mistle thrushes are named for their love of mistletoe berries, and like to sing from the tops of tall trees. They are slightly larger than blackbirds and are fiercely territorial. They have been known to attack cats, dogs, and even people in protection of sources of berries. Once common in South Cambridgeshire mistle thrushes are now on the endangered red list.

On the wildflower meadow Iain pointed out the shoots of bee and pyramidal orchids. Hopefully that means we'll get a good showing of orchids in around four months time. At the iron bridge down grassy lane there was recent evidence of water vole activity. This means the water voles are expanding upstream which is great news.

Due to a major event at the Wildlife Trust, March's wetlands wildlife walk has been brought forward to **Wednesday the 12th. Meet on the wooden bridge at 12:00** for an hour's walk led by Iain Webb from the Wildlife Trust.

**David Keating**



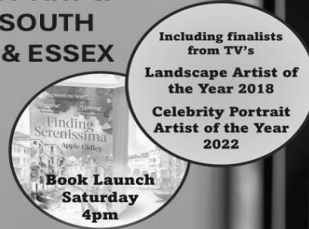
**ICKLETON**  
**ART &  
LITERATURE  
EXHIBITION**

**15  
16 MARCH**

Saturday 10am - 5pm  
Sunday 11am - 4pm

**OVER 100 WORKS OF ART &  
LITERATURE FROM SOUTH  
CAMBRIDGESHIRE & ESSEX**

BOOK SIGNINGS  
REFRESHMENTS  
FREE ENTRY



**ICKLETON SOCIAL CLUB**  
Church Street, Ickleton. CB10 1SL

**ICKLETON SOCIAL CLUB – WHAT’S ON IN MARCH**

**SUNDAY LUNCHTIMES – 12 to 2 pm – 2nd and 16th**

**SUNDAY EVENINGS - 7.30 to 10.30pm – 9th and 23rd**

**MONDAY FIVE O’CLOCK CLUB - 5 to 7pm**  
Drinks with friends and neighbours

**WEDNESDAY FIVE THIRTY CLUB - 5.30 to 7.30pm**  
Mid week drinks with friends and neighbours

**FRIDAY & SATURDAY from 6 pm**

**Members £10 - £5 for those in their golden years [65 +] – Guests £1 per visit**

For updates, please check WhatsApp, Ickleinfo, Ickleton Social Club News, & board outside the Club

**UPCOMING EVENTS**

**SUNDAY JAZZ**

**Sunday 2nd March (lunchtime opening)**

**ICKLETON JAZZ COLLECTIVE**

Live music, local musicians, cool, classic tunes.

**Members free. Guests £1**

General knowledge

**QUIZ**

**Friday 21<sup>st</sup> March**

**Tables of 4; £3 per person.**

Contact Social Club for tickets

Ickleton Social Club is a wonderful village asset and is completely run by hard working volunteers. We warmly welcome everyone and thank you all for supporting our efforts.

**2025 membership renewals are now available.**  
**Annual club membership £10. Guests £1 per visit.**



## LIVE at THE ICKLETON SOCIAL CLUB

Saturday 22nd March 7.30 pm.

### Denim Roses

Highly popular local musicians, Carla Gray (Rendition), Richard Weidman Sabrina Jackson (the Spree) and Shaun Howlett (Just Jammin) team up to give us 'Denim Roses'. An amazingly authentic country sound (Cowboy hats and boots included). Playing plenty of foot tappin' toones to sing and dance along to, the four piece band are going from strength to strength. Riding high on the current country wave and building a reputation as one of the finest country bands around these parts.

Doors open 7.30 pm. Cash bar. Please support live music in Ickleton. It only works because of you!

## CAB - Support for Families

Raising a family and seeing your child develop and grow can be immensely rewarding. Family life can also present many challenges and there may be times when you need some extra help or guidance.

Friendly advisers at Uttlesford Citizens Advice are here to provide free, practical advice, tailored to your needs. Reaching out for support at the right time can help prevent challenges from becoming overwhelming for your family. We're here to help you focus on what matters most, empowering you with the knowledge and confidence to take control and make the most of these precious years.

We can offer support with a range of issues:

- Checking entitlements to benefits
- Money and budgeting advice
- Help with school costs such as transport and school meals
- Help with childcare costs
- Support for children with special educational needs and/or a disability
- Relationship conflict or coping with the end of a relationship
- Child maintenance issues
- Maternity & paternity rights and requests for flexible working
- Housing issues such as tenancy rights or poor quality housing

Other local services that support young

<https://essexfrontline.org.uk/>

**Uttlesford Citizens Advice**

**Barnards Yard, Saffron Walden CB11 4EB**

**01799 618840**

[help@uttlesfordca.org.uk](mailto:help@uttlesfordca.org.uk)

families can be found at



[www.uttlesfordca.org.uk](http://www.uttlesfordca.org.uk)

## BLOOD DONATION - ICKLETON VILLAGE HALL

Forthcoming dates for blood donation: Monday 5th May + Monday 26th May.

## ICKLETON VILLAGE

### Local Services

**COSTCUTTER Village shop** - Opening times: Mon to Sat 8 am - 7 pm. Sunday 9 am - 1 pm.

The shop now offers **INPOST**

#### Post collections

	Monday to Friday	Saturday
Costcutter shop )		
Bottom Butchers Hill )	9.00 am	7.00 am
Coploe Rd/Grange Rd corner )		
Whittlesford Shop/Post office	4.00 pm	
Saffron Walden Market Square	latest 6.00 pm	12 midday
Sawston High Street by the Post Office	Noon, 3 pm and 4.45 pm	12.30 - 1 pm

#### HELP for dealing with Covid 19

The service is continuing for the time being. The names of helpers for any streets is available from me if you need.

Anne-Marie Hoare

**Village Hall Bookings** Email: [bookingsecivh@gmail.com](mailto:bookingsecivh@gmail.com)

**Police** [reporting a crime, non emergency] Call 101

**Neighbourhood Watch** – Glynis Hammond [glynis.hammond@gmail.com](mailto:glynis.hammond@gmail.com)

**District & County Councillor** – Peter McDonald – [Cllr.mcdonald@scamb.gov.uk](mailto:Cllr.mcdonald@scamb.gov.uk)

**Community Warden Scheme** – - Anita Gilchrist [ageukcap.co.uk](mailto:ageukcap.co.uk)

**Speedwatch Team** – Terry Sadler – [terrywsadler@btinternet.com](mailto:terrywsadler@btinternet.com)  
and Penny Fletcher – [penny@penelopeannefletcher.co.uk](mailto:penny@penelopeannefletcher.co.uk)

#### Cambridge Mobile Library

The **third Wednesday** in each month (19th March 12.45 - 1.15 pm. In Frogge Street by the bus stop. Books may still be PRE-SELECTED IN ADVANCE from the whole of Cambridge Libraries collection, and available to collect. To reserve, contact...<https://cambridgeshire.spydus.co.uk> (free of charge).

#### Food Bank

Thank you for all your generous donations. The baby food and baby toiletries have been fantastic – the baby milk now cost the best part of £30.

The weather is still cold so the focus is on:

Light to carry (generally there is no car)-

Easy to eat – (for the elderly think teeth)

Cheap to heat (microwave or kettle)

No heat items - sadly some have no fridge or oven and cannot afford power.

I can collect if you contact me or fetch from the Church most Tuesdays.

Thank you **Clare Driver** [clare@domesticblissappointments.co.uk](mailto:clare@domesticblissappointments.co.uk)

**Food Aid** For anyone in Ickleton who wants to ask for food or other groceries (*in complete privacy*) please call Clare who will endeavour to fulfil your shopping list needs

Clare Driver

---

## FOOD DELIVERIES

Generally - **Costcutter village shop** - ☎ 531181 and ask for a delivery.

**Milk** Fresh milk (bottles) – Monday, Wednesday and Friday. Martin of Plumb's Dairy (Linton)  
Tel: 01223 893033 info@plumbs-dairy.co.uk

**Meat** delivery – Thursdays – Clark & Son [Sudbury] 01787 319330 sales@clarkandsonmeats.com.

**Fresh fish** van delivery - Monday afternoon - call or text Andy 07773 275134

**Fruit and Veg** delivery:

Fisher and Woods ☎ 581620 sales@fisherandwoods.co.uk

Walden Organics (Rob) waldenorganics@btinternet.com 01787 279021 or 07470 057638

**Fish and Chips** Mobile van now on MONDAYS 4.30 - 8 pm Village Hall car park  
Pre-orders only. Tel: 07787 603616 info@oceantree.co.uk

---

## Regular Meetings and Events

**Coffee Mornings** Tuesdays 4th and 18th March 10.30 - 12 at the church All welcome  
We are currently sharing coffee morning proceeds between the church and various charities.

**The Coffee Morning Team**

---

**Bowls** Every Thursday 11 am - 1 pm and 2 - 4 pm Village Hall **Martin Waters**

---

**Keep Fit** (flexible to needs) on Tuesdays 7 - 8 pm Village Hall

---

**Sew Calm** At Ickleton Social Club - just Saturday 22nd this month 10 am to 12 noon  
**Gill Laird** or

---

**Social Club** (bar open) Fridays and Saturdays from 6 pm  
(See p. 9) Sundays 2nd and 16th 12 - 2 pm  
Sunday evenings 9th and 23rd 7.30 - 10.30 pm  
Mondays 5 - 7 pm and Wednesdays 5.30 - 7.30  
Jazz on Sunday 2nd March at the lunchtime opening  
Quiz Friday 21st March

**ICKLE-GIG** (see p.10) Saturday 22nd March 7.30 pm  
Popular local country band Denim Roses

---

**Parish Council Meeting** Wednesday 19th March 7.30 pm Village Hall

---

**Pub Lunch Club** Tuesday 11th March 12 noon at the Hinxtton Red Lion (p.5) **Jon Smith**  
*Pre Orders by the Sunday before the lunch*

---

**Froglets** Mondays 9.30 - 11.30 am Village Hall **Anne-Marie Hoare**

---

**Great Chesterford & District Gardening Soc** Wednesday 5th March 7.30 pm Village Hall see p.8

---

**PUBLISHED BY ICKLETON PARISH COUNCIL**

**Printed by E & E Plumridge Limited, 41, High Street, Linton, Cambs**